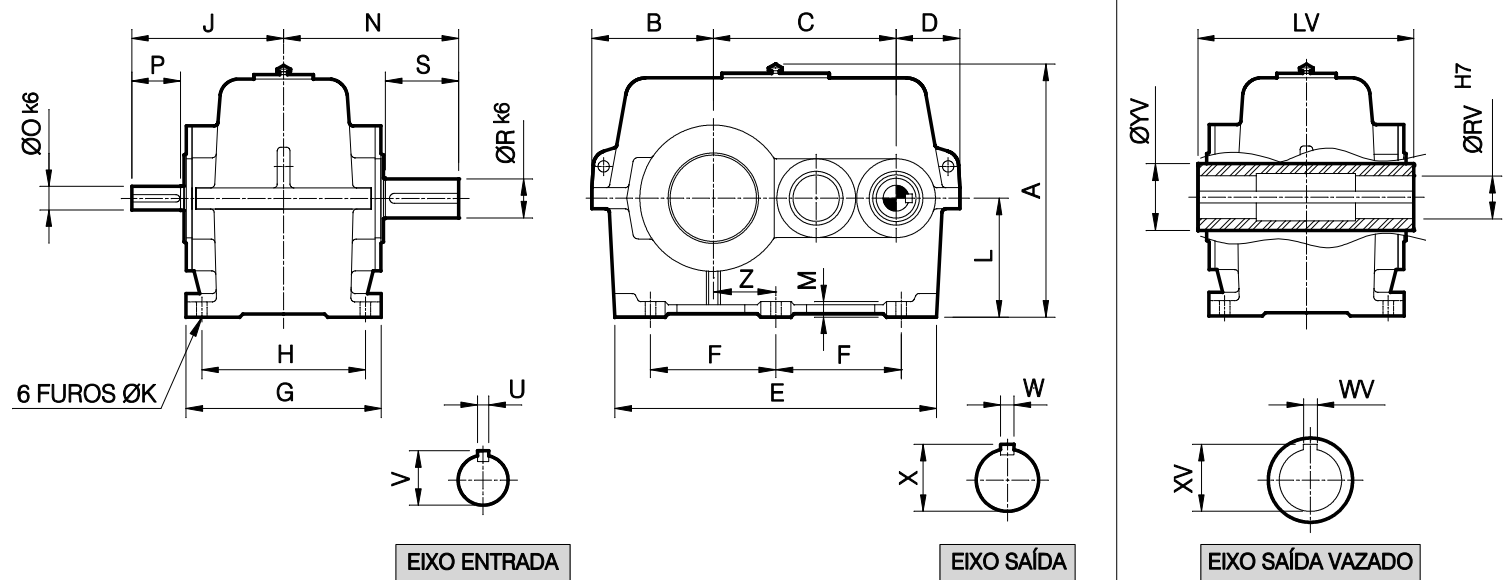


REDUTORES A ENGRENAGENS HELICOIDAIS - LINHA H1000

CAPACIDADES A 1750 RPM NA ENTRADA

| TIPO | REDUÇÃO | 6,3 | 7,1 | 8 | 9 | 10 | 11,2 | 12,5 | 14 | 16 | 18 | 20 | 22,4 | 25 | 28 | 31,5 | 35,5 | 40 | 45 |
|------|---------------|-------|-------|-------|-------|-------|-------|-------|-------|-------|-------|-------|-------|-------|-------|-------|------|------|------|
| H20 | POTÊNCIA (CV) | 18.1 | 15.7 | 13.6 | 11.9 | 10.5 | 9.1 | 8.0 | 7.0 | 6.0 | 5.2 | 4.6 | 4.0 | 3.5 | 3.1 | 2.7 | 2.3 | 2.0 | 1.7 |
| | RED. EFETIVA | 6.3 | 7.0 | 8.1 | 9.1 | 9.9 | 11.2 | 12.7 | 13.8 | 15.8 | 18.2 | 19.8 | 23.7 | 25.7 | 27.6 | 30.0 | 33.2 | 39.8 | 44.9 |
| | TORQUE (Kgfm) | 45 | 43 | 43 | 42 | 41 | 40 | 40 | 38 | 37 | 37 | 36 | 37 | 35 | 33 | 31 | 29 | 30 | 29 |
| H21 | POTÊNCIA (CV) | 42.4 | 35.8 | 30.2 | 25.5 | 22.0 | 18.7 | 16.0 | 13.6 | 11.2 | 9.5 | 8.2 | 7.0 | 6.0 | 5.1 | 4.3 | 3.6 | 3.0 | 2.6 |
| | RED. EFETIVA | 6.5 | 7.0 | 7.8 | 8.8 | 10.1 | 11.4 | 12.8 | 13.9 | 16.0 | 18.4 | 20.0 | 23.0 | 25.0 | 27.5 | 30.0 | 36.0 | 39.8 | 45.0 |
| | TORQUE (Kgfm) | 108 | 98 | 92 | 88 | 87 | 83 | 80 | 74 | 70 | 68 | 64.0 | 63 | 58 | 55 | 50 | 50 | 46 | 45 |
| H22 | POTÊNCIA (CV) | 72.0 | 60.4 | 50.6 | 42.5 | 36.4 | 30.7 | 26.1 | 22.1 | 18.1 | 15.2 | 13.0 | 11.0 | 9.4 | 7.9 | 6.7 | 5.6 | 4.7 | 3.9 |
| | RED. EFETIVA | 6.4 | 7.1 | 7.9 | 9.1 | 10.2 | 11.8 | 12.5 | 14.1 | 16.2 | 18.4 | 20.0 | 22.9 | 25.0 | 27.5 | 30.0 | 35.2 | 41.5 | 45.9 |
| | TORQUE (Kgfm) | 180 | 167 | 156 | 151 | 145 | 141 | 127 | 122 | 114 | 109 | 101 | 98 | 92 | 85 | 78 | 74 | 75 | 69 |
| H23 | POTÊNCIA (CV) | 114.0 | 95.6 | 80.1 | 67.3 | 57.6 | 48.8 | 41.5 | 35.1 | 28.8 | 24.2 | 20.7 | 17.5 | 14.9 | 12.6 | 10.6 | 8.9 | 7.4 | 6.3 |
| | RED. EFETIVA | 6.3 | 7.1 | 8.0 | 8.6 | 10.5 | 11.3 | 12.7 | 13.7 | 15.6 | 17.9 | 20.3 | 22.4 | 25.4 | 29.7 | 33.6 | 34.5 | 40.4 | 44.8 |
| | TORQUE (Kgfm) | 280 | 265 | 250 | 226 | 236 | 215 | 206 | 188 | 175 | 169 | 164 | 153 | 148 | 146 | 139 | 120 | 117 | 110 |
| H24 | POTÊNCIA (CV) | 172.4 | 145.6 | 122.7 | 103.2 | 89.7 | 76.1 | 64.8 | 55.0 | 45.2 | 38.1 | 32.7 | 27.7 | 23.6 | 20.0 | 16.9 | 14.2 | 11.9 | 10.0 |
| | RED. EFETIVA | 6.2 | 7.1 | 8.0 | 8.9 | 10.6 | 11.9 | 12.6 | 14.0 | 16.1 | 18.2 | 21.2 | 22.1 | 25.7 | 26.5 | 30.8 | 36.0 | 40.0 | 44.8 |
| | TORQUE (Kgfm) | 420 | 406 | 385 | 361 | 371 | 353 | 318 | 300 | 239 | 270 | 270 | 239 | 236 | 208 | 203 | 200 | 186 | 175 |
| H25 | POTÊNCIA (CV) | 247.6 | 212.6 | 182.6 | 155.2 | 132.3 | 112.6 | 99.1 | 84.2 | 69.5 | 58.7 | 50.5 | 42.9 | 36.6 | 31.1 | 26.3 | 22.1 | 18.7 | 15.8 |
| | RED. EFETIVA | 6.2 | 7.1 | 8.0 | 8.9 | 10.5 | 11.7 | 12.4 | 13.8 | 15.8 | 18.0 | 19.6 | 21.5 | 23.4 | 28.1 | 30.7 | 35.5 | 39.2 | 43.0 |
| | TORQUE (Kgfm) | 603 | 593 | 573 | 543 | 545 | 517 | 479 | 453 | 428 | 412 | 386 | 360 | 334 | 341 | 315 | 306 | 286 | 265 |
| H26 | POTÊNCIA (CV) | 347.6 | 298.7 | 257.8 | 222.3 | 196.1 | 170.3 | 147.2 | 125.3 | 103.7 | 87.7 | 75.6 | 64.3 | 55.1 | 46.9 | 39.7 | 33.5 | 28.3 | 23.9 |
| | RED. EFETIVA | 5.7 | 6.9 | 7.5 | 8.4 | 10.3 | 11.5 | 13.0 | 14.9 | 17.1 | 18.4 | 21.4 | 22.2 | 25.8 | 28.0 | 32.5 | 35.4 | 43.1 | 46.7 |
| | TORQUE (Kgfm) | 778 | 809 | 759 | 733 | 793 | 769 | 746 | 728 | 691 | 629 | 631 | 557 | 554 | 512 | 503 | 463 | 476 | 435 |
| H27 | POTÊNCIA (CV) | 466.7 | 406.4 | 352.8 | 305.7 | 273.6 | 240.1 | 209.8 | 180.7 | 149.7 | 126.9 | 109.4 | 93.3 | 79.9 | 68.2 | 57.8 | 48.8 | 41.3 | 35.0 |
| | RED. EFETIVA | 6.1 | 7.2 | 8.1 | 9.2 | 10.0 | 11.3 | 12.2 | 14.0 | 16.0 | 17.6 | 19.4 | 22.3 | 24.6 | 28.0 | 30.8 | 36.0 | 39.8 | 45.0 |
| | TORQUE (Kgfm) | 1118 | 1150 | 1122 | 1104 | 1074 | 1065 | 1005 | 987 | 934 | 871 | 828 | 811 | 767 | 745 | 694 | 685 | 641 | 614 |
| H28 | POTÊNCIA (CV) | 607.5 | 537.3 | 472.3 | 411.1 | 367.7 | 325.7 | 290.3 | 250.3 | 209.7 | 177.9 | 153.5 | 131.0 | 112.4 | 95.9 | 81.4 | 68.9 | 58.3 | 49.4 |
| | RED. EFETIVA | 6.2 | 7.2 | 8.1 | 9.2 | 10.9 | 12.4 | 13.4 | 15.2 | 17.6 | 19.3 | 21.0 | 23.0 | 25.0 | 28.0 | 30.5 | 36.1 | 39.9 | 45.1 |
| | TORQUE (Kgfm) | 1479 | 1520 | 1503 | 1485 | 1574 | 1586 | 1528 | 1494 | 1439 | 1338 | 1257 | 1175 | 1096 | 1047 | 968 | 970 | 907 | 869 |
| H29 | POTÊNCIA (CV) | 805.4 | 707.0 | 616.5 | 541.5 | 486.5 | 427.6 | 382.5 | 333.2 | 288.1 | 244.7 | 211.5 | — | 155.3 | 132.7 | 112.7 | 95.5 | 81.0 | 68.8 |
| | RED. EFETIVA | 6.2 | 7.1 | 7.6 | 8.3 | 10.4 | 11.4 | 12.9 | 14.1 | 16.3 | 17.8 | 21.4 | — | 25.8 | 27.0 | 32.5 | 36.1 | 41.0 | 45.5 |
| | TORQUE (Kgfm) | 1961 | 1972 | 1840 | 1765 | 1987 | 1915 | 1938 | 1840 | 1831 | 1699 | 1765 | — | 1560 | 1397 | 1428 | 1344 | 1295 | 1221 |

DIMENSÕES (mm)



| TIPO | A | B | C | D | E | F | G | H | J | ØK | L | M | N | ØO | P | ØR | S | U | V | W | X | Z | LV | RV | WW | XV | YV | PESO |
|------|-----|-----|-----|-----|-----|-----|-----|-----|-----|----|-----|----|-----|----|-----|-----|-----|----|------|----|------|------|-----|----|----|------|-----|------|
| H20 | 215 | 122 | 171 | 72 | 313 | 115 | 180 | 150 | 135 | 13 | 102 | 16 | 162 | 18 | 40 | 38 | 65 | 6 | 20,5 | 10 | 41 | 65 | 197 | 25 | 8 | 28,3 | 40 | 48 |
| H21 | 268 | 133 | 192 | 81 | 358 | 139 | 217 | 180 | 165 | 13 | 130 | 19 | 198 | 22 | 45 | 42 | 80 | 6 | 24,5 | 12 | 45 | 69,5 | 243 | 30 | 8 | 33,3 | 45 | 65 |
| H22 | 305 | 154 | 215 | 93 | 403 | 154 | 240 | 201 | 176 | 13 | 146 | 23 | 215 | 24 | 50 | 48 | 90 | 8 | 27,0 | 14 | 51,5 | 77 | 254 | 35 | 10 | 38,3 | 60 | 92 |
| H23 | 333 | 175 | 240 | 94 | 450 | 170 | 257 | 222 | 185 | 13 | 160 | 25 | 235 | 28 | 50 | 55 | 100 | 8 | 31,0 | 16 | 59 | 80 | 276 | 40 | 12 | 43,3 | 60 | 110 |
| H24 | 380 | 183 | 272 | 114 | 506 | 189 | 284 | 238 | 215 | 17 | 185 | 30 | 268 | 32 | 65 | 65 | 120 | 10 | 35,0 | 18 | 69 | 106 | 303 | 50 | 14 | 53,8 | 70 | 152 |
| H25 | 405 | 208 | 305 | 124 | 564 | 212 | 317 | 267 | 235 | 17 | 200 | 33 | 305 | 38 | 70 | 75 | 140 | 10 | 41,0 | 20 | 79,5 | 109 | 334 | 55 | 16 | 59,3 | 80 | 200 |
| H26 | 430 | 240 | 340 | 136 | 620 | 230 | 340 | 275 | 258 | 17 | 205 | 37 | 332 | 42 | 80 | 80 | 155 | 12 | 45,0 | 22 | 85 | 125 | 354 | 65 | 18 | 69,4 | 90 | 270 |
| H27 | 480 | 274 | 385 | 135 | 685 | 253 | 405 | 345 | 290 | 22 | 234 | 42 | 372 | 48 | 90 | 90 | 170 | 14 | 51,5 | 25 | 95 | 125 | 404 | 75 | 20 | 79,9 | 100 | 370 |
| H28 | 510 | 303 | 430 | 148 | 765 | 285 | 415 | 364 | 340 | 22 | 250 | 50 | 421 | 50 | 120 | 100 | 200 | 14 | 53,5 | 28 | 106 | 137 | 443 | 80 | 22 | 85,4 | 110 | 475 |
| H29 | 619 | 348 | 480 | 173 | 867 | 320 | 471 | 405 | 374 | 25 | 293 | 60 | 465 | 60 | 130 | 110 | 220 | 18 | 64,0 | 28 | 116 | 152 | 490 | 85 | 22 | 90,4 | 120 | 660 |

| FATOR DE VELOCIDADE FV (POT. EQUIV. = POT TABELA x FV) | rpm | 1500 | 1200 | 900 | 600 | 300 | 100 |
|---|-----|------|------|-----|------|-----|-----|
| | FV | 0,87 | 0,71 | 0,6 | 0,43 | 0,2 | 0,1 |